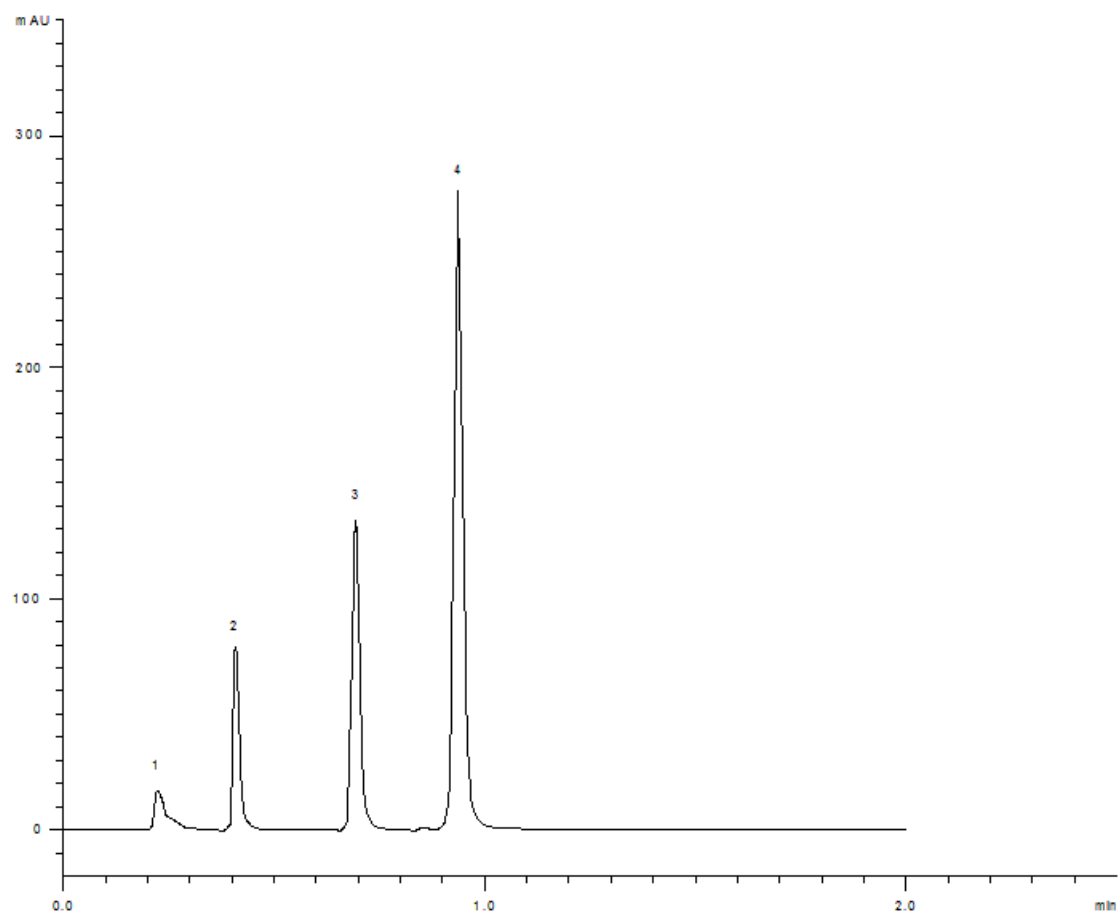


19556



Column: [Kinetex 2.6u Phenyl-Hexyl 100A](#)

Part No: [00B-4495-AN](#)

Dimensions: 50 x 2.1 mm ID

Elution Type: Isocratic

Elution A: water

Elution B: ACN

Gradient Profile:

Step No.	Time (min)	Pct A	Pct B
1	0	50	50

Flow Rate: 0.5 mL/min

Col. Temp: 30 °C

Detection: UV-Vis Abs.-Variable Wave.(UV) @ 254 nm (22°C)

Compounds:

- 1- uracil
- 2- acetophenone
- 3- toluene
- 4- naphthalene