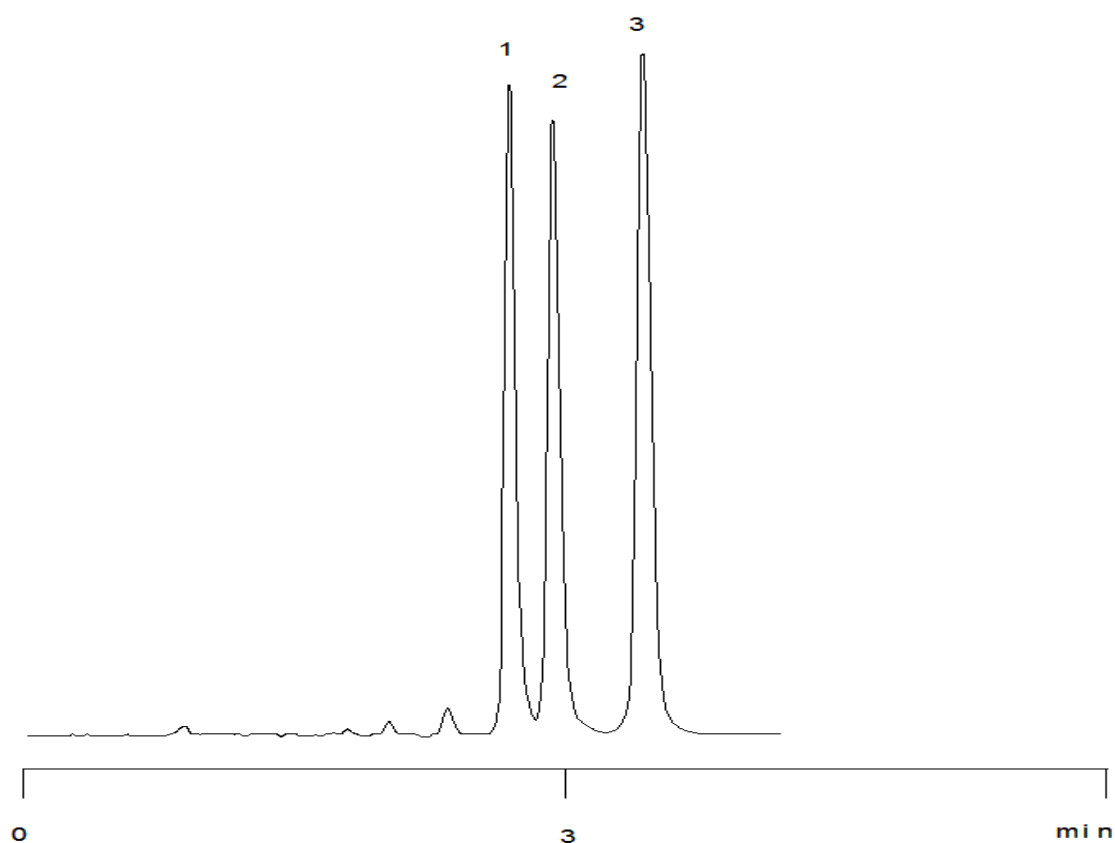


15485



**Column:** [Onyx Monolithic Si Column 100 x 4.6 mm](#)

**Part No:** [CH0-7648](#)

**Dimensions:** 100 x 4.6 mm ID

**Elution Type:** Isocratic

**Elution A:** n-Heptane

**Elution B:** Dioxane

**Gradient Profile:**

Step No.	Time (min)	Pct A	Pct B
1	0	95	5

**Flow Rate:** 2 mL/min

**Col. Temp:** ambient

**Detection:** UV-Vis Abs.-Variable Wave.(UV) @ 254 nm (22°C)

**Compounds:**

- 1- 4-Nitroacetophenone
- 2- 3-Nitroacetophenone
- 3- 2-Nitroacetophenone