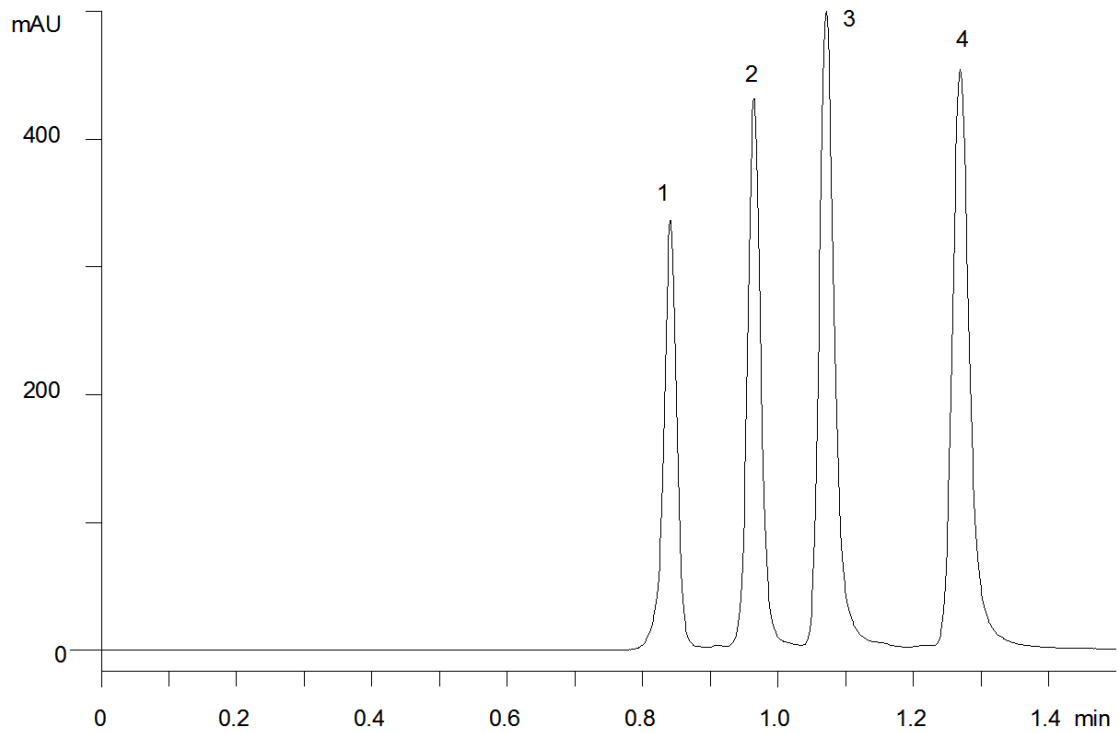


15651



**Column:** [Onyx™ Monolithic Si, LC Column 100 x 4.6 mm, Ea](#)

**Part No:** [CH0-7648](#)

**Dimensions:** 100 x 4.6 mm ID

**Elution Type:** Isocratic

**Elution A:** Hexane

**Elution B:** Ethanol

**Gradient Profile:**

Step No.	Time (min)	Pct A	Pct B
1	0	95	5

**Flow Rate:** 2 mL/min

**Col. Temp:** ambient

**Detection:** UV-Vis Abs.-Variable Wave.(UV) @ 254 nm (22°C)

**Compounds:**

- 1- Anisole
- 2- 3-Nitroanisole
- 3- 4-Nitroanisole
- 4- 2-Nitroanisole