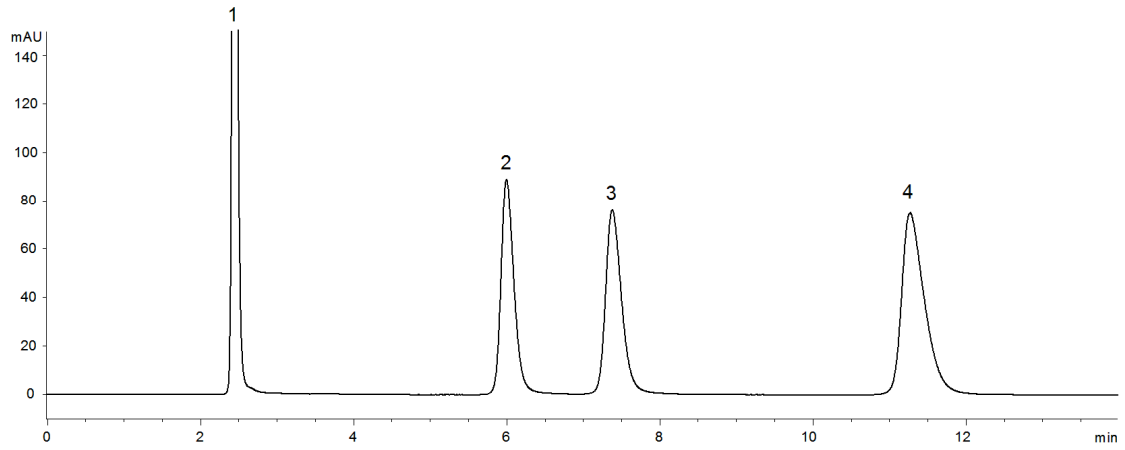


15899



**Column:** [Gemini® 5 µm C6-Phenyl 110 Å LC Column 150 x 4.6 mm](#)

**Part No:** [00F-4444-E0](#)

**Dimensions:** 150 x 4.6 mm ID

**Elution Type:** Isocratic

**Elution A:** 20mM Potassium Phosphate pH 2.5

**Elution B:** Methanol

**Gradient Profile:**

Step No.	Time (min)	Pct A	Pct B
1	0	60	40

**Flow Rate:** 1 mL/min

**Col. Temp:** ambient

**Detection:** UV-Vis Abs.-Variable Wave.(UV) @ 220 nm (22°C)

**Compounds:**

- 1- Malic acid
- 2- Chlorpheniramine
- 3- Brompheniramine
- 4- Diphenhydramine