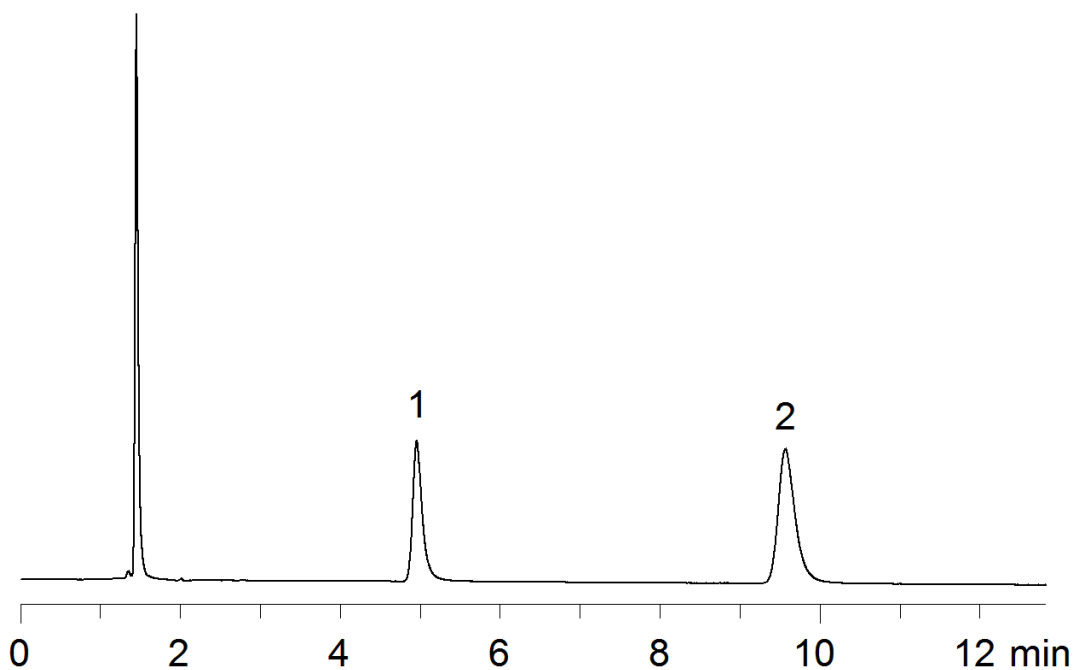


16896



**Column:** [Synergi™ 4 µm Max-RP 80 Å LC Column 150 x 4.6 mm](#)

**Part No:** [00F-4337-E0](#)

**Dimensions:** 150 x 4.6 mm ID

**Elution Type:** Isocratic

**Elution A:** 20mM Potassium phosphate pH 7

**Elution B:** Acetonitrile

**Elution C:** Methanol

**Gradient Profile:**

Step No.	Time (min)	Pct A	Pct B	Pct C
1	0	65	10	25

**Flow Rate:** 1 mL/min

**Col. Temp:** 30 °C

**Detection:** UV-Vis Abs.-Variable Wave.(UV) @ 210 nm (22°C)

**Compounds:**

- 1- Naphazoline
- 2- Pheniramine