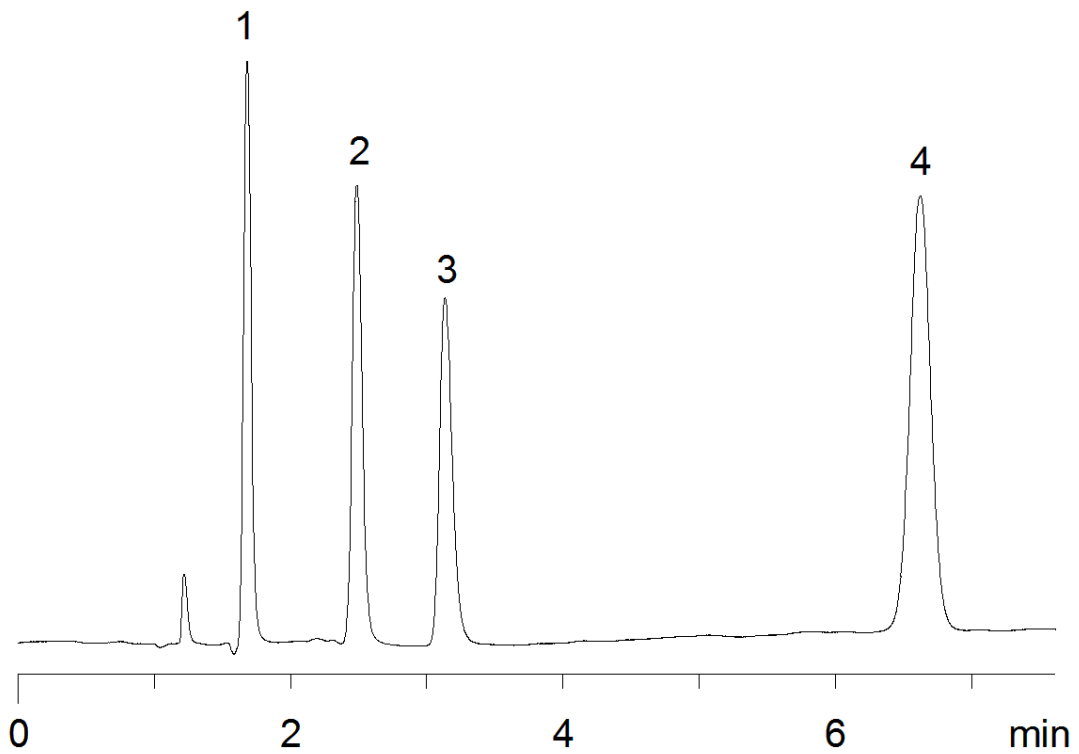


16906



**Column:** [Synergi™ 4 µm Polar-RP 80 Å, LC Column 150 x 4.6 mm, Ea](#)

**Part No:** [00F-4336-E0](#)

**Dimensions:** 150 x 4.6 mm ID

**Elution Type:** Isocratic

**Elution A:** 20mM Potassium phosphate pH 7

**Elution B:** Methanol

**Gradient Profile:**

Step No.	Time (min)	Pct A	Pct B
1	0	65	35

**Flow Rate:** 1.5 mL/min

**Col. Temp:** 25 °C

**Detection:** UV-Vis Abs.-Variable Wave.(UV) @ 210 nm (22°C)

**Compounds:**

- 1- Phenylephrine
- 2- Phenylpropanolamine
- 3- Pseudoephedrine
- 4- Methylparaben