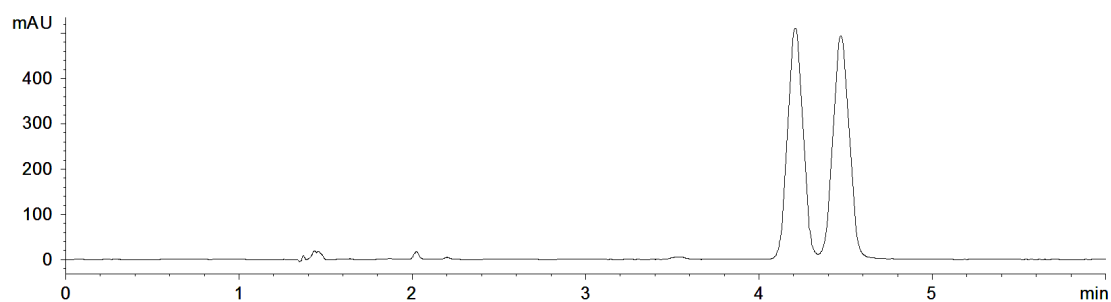


18206



**Column:** [Lux 5u Cellulose-1, LC Column 250 x 4.6 mm, Ea](#)

**Part No:** [00G-4459-E0](#)

**Dimensions:** 250 x 4.6 mm ID

**Elution Type:** Isocratic

**Elution A:** 0.1% DEA+0.1% TFA in methanol

**Elution B:** CO<sub>2</sub>

**Gradient Profile:**

Step No.	Time (min)	Pct A	Pct B
1	0	30	70

**Flow Rate:** 2 mL/min

**Col. Temp:** 40 °C

**Detection:** UV-Vis Abs.-Variable Wave.(UV) @ 273 nm (22°C)

**Compounds:**

1- Bendroflumethiazide