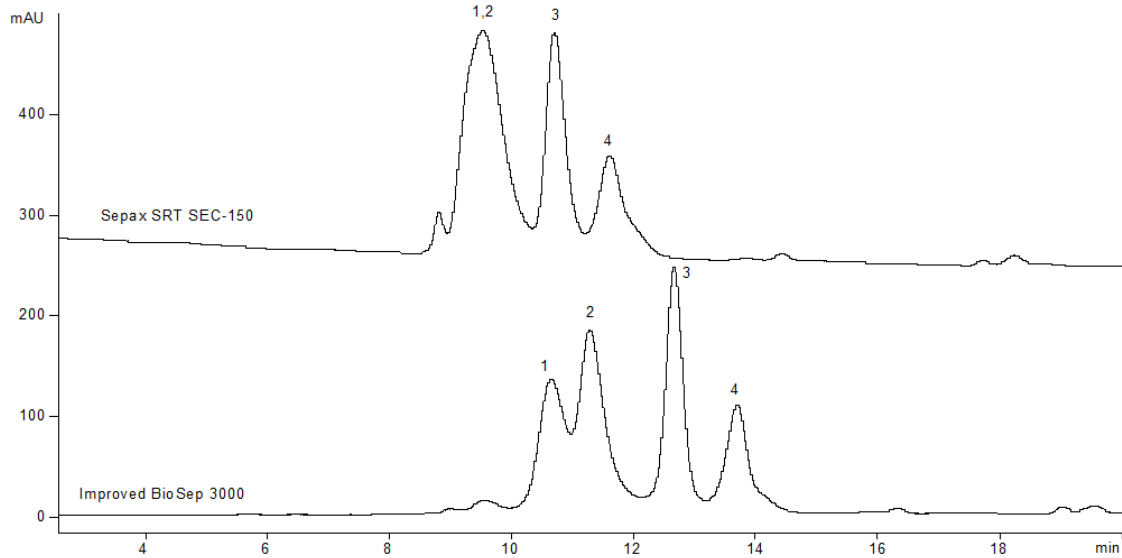


19091



Column: [BioSep™ 5 µm SEC-s2000 145 Å, LC Column 300 x 7.8 mm, Ea](#)

Part No: [00H-2145-K0](#)

Dimensions: 300 x 7.8 mm ID

Elution Type: Isocratic

Elution A: 10mM Tris, 150mM NaCl, pH 7.4

Gradient Profile:

Step No.	Time (min)	Pct A
1	0	100

Flow Rate: 0.6 mL/min

Col. Temp: ambient

Detection: UV-Vis Abs.-Variable Wave.(UV) @ 214 nm (22°C)

Compounds:

1- IgA 320 KDa

2- Beta-Amylase 200 KDa

3- BSA 66 KDa

4- Ovalbumin 45 KDa