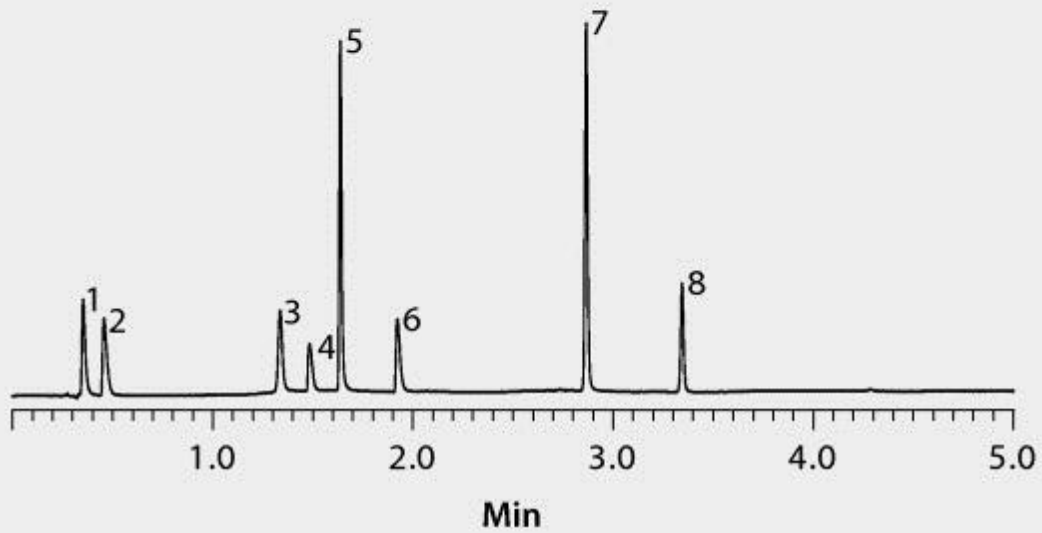


1. Maleic acid
2. Phenylephrine
3. Acetaminophen
4. Pseudoephedrine
5. Caffeine
6. Chlorpheniramine
7. Naproxen
8. Ibuprofen



test parameters	<p>column: Ascentis Express C18, 5 cm x 2.1 mm I.D., 2.7 μm particles (53822-U)</p> <p>mobile phase: (A) 5 mM ammonium phosphate monobasic, pH 2.0 with phosphoric acid: acetonitrile (98:2); (B) acetonitrile;</p> <p>gradient: 0 to 68% B in 3 min; held at 68% B for 2 min</p> <p>flow rate: 0.4 mL/min</p>
	column temp.: 35 $^{\circ}$ C
	detector: UV, 210 nm
	injection: 1 μ L