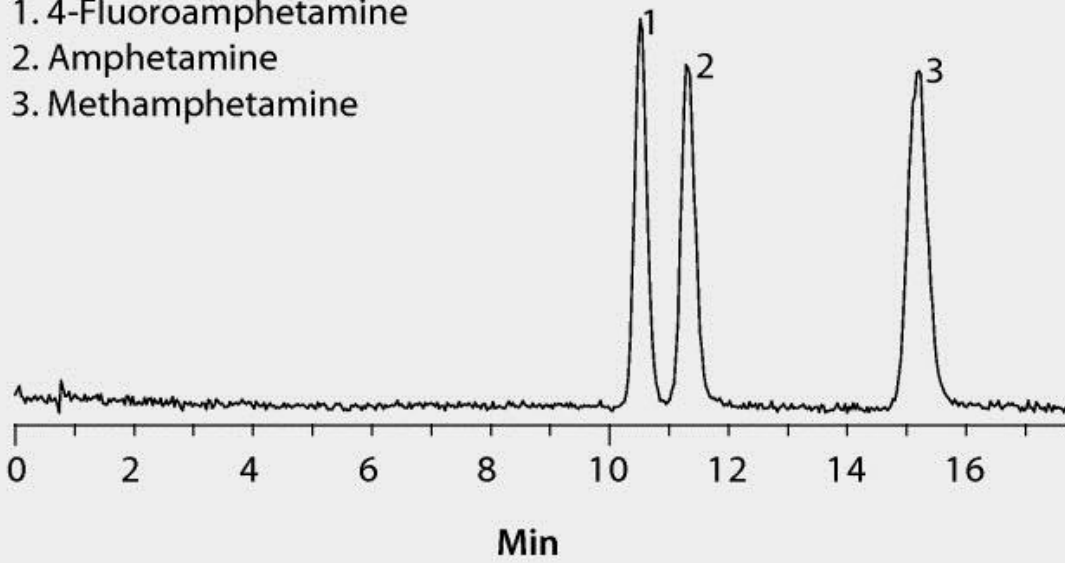


1. 4-Fluoroamphetamine
2. Amphetamine
3. Methamphetamine



test parameters	column: Ascentis Express HILIC, 10 cm x 3 mm I.D., 2.7 $\mu$ m particles (53970-U)
	mobile phase: (A) 1 mM ammonium acetate in (B) 10:90 (v/v) water:acetonitrile
	flow rate: 0.6 mL/min
	pressure: 82 bar
	column temp.: 35 $^{\circ}$ C
	detector: ESI(+), full scan, m/z 110-200
	injection: 2 $\mu$ L