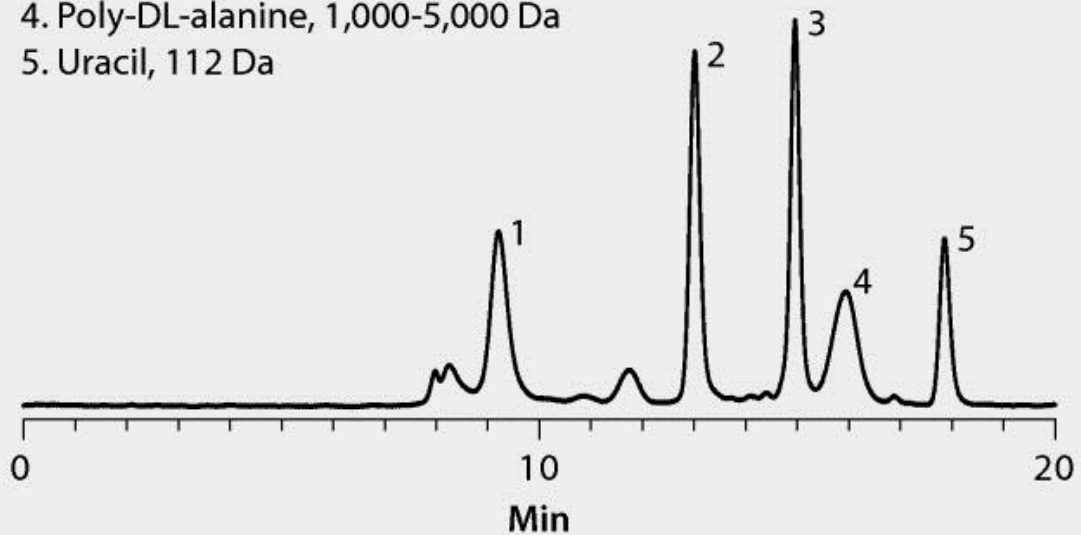


1. Thyroglobulin, 669,000 Da
2. BSA (bovine serum albumin), 66,463 Da
3. Ribonuclease A, 13,700 Da
4. Poly-DL-alanine, 1,000-5,000 Da
5. Uracil, 112 Da



test parameters	column: Discovery BIO GFC 300, 30 cm x 7.8 mm I.D., 3 µm particles (567337-U)
	mobile phase: 150 mM potassium phosphate monobasic, pH 7.0 (adjusted with potassium hydroxide)
	flow rate: 0.7 mL/min
	pressure: 56 bar
	column temp.: 25 °C
	detector: UV, 214 nm
	injection: 1 µL
	sample: 1 g/L each (except uracil, 0.1 g/L) in mobile phase