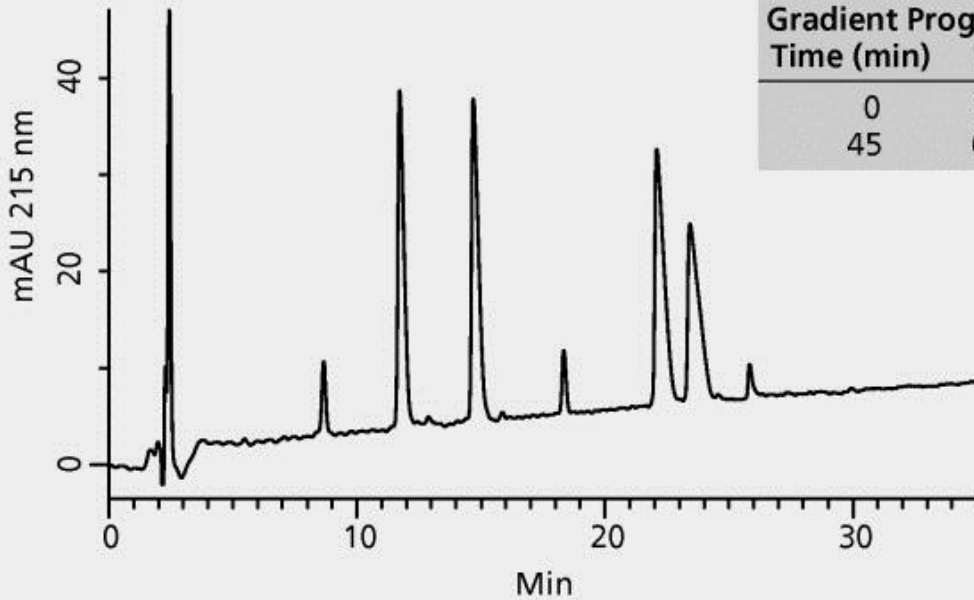


Peptide 1: ac-GGGLGGAGGLK-amide  
 Peptide 2: ac-KYGLGGAGGLK-amide  
 Peptide 3: ac-GGALKALKGLK-amide  
 Peptide 4: ac-KYALKALKGLK-amide



Gradient Program	
Time (min)	%B
0	15
45	60

test parameters	column: Discovery BIO Wide Pore C18, 15 cm × 2.1 mm I.D., 5 μm particles (568202-U)
	mobile phase: (A) 25 mM formic acid in water; (B) 50:50 (25 mM formic acid in water):(20 mM formic acid in acetonitrile)
	flow rate: 0.20 mL/min
	column temp.: 35 °C
	detector: UV, 215 nm
	injection: 0.5 μL (~0.25 μg each peptide)