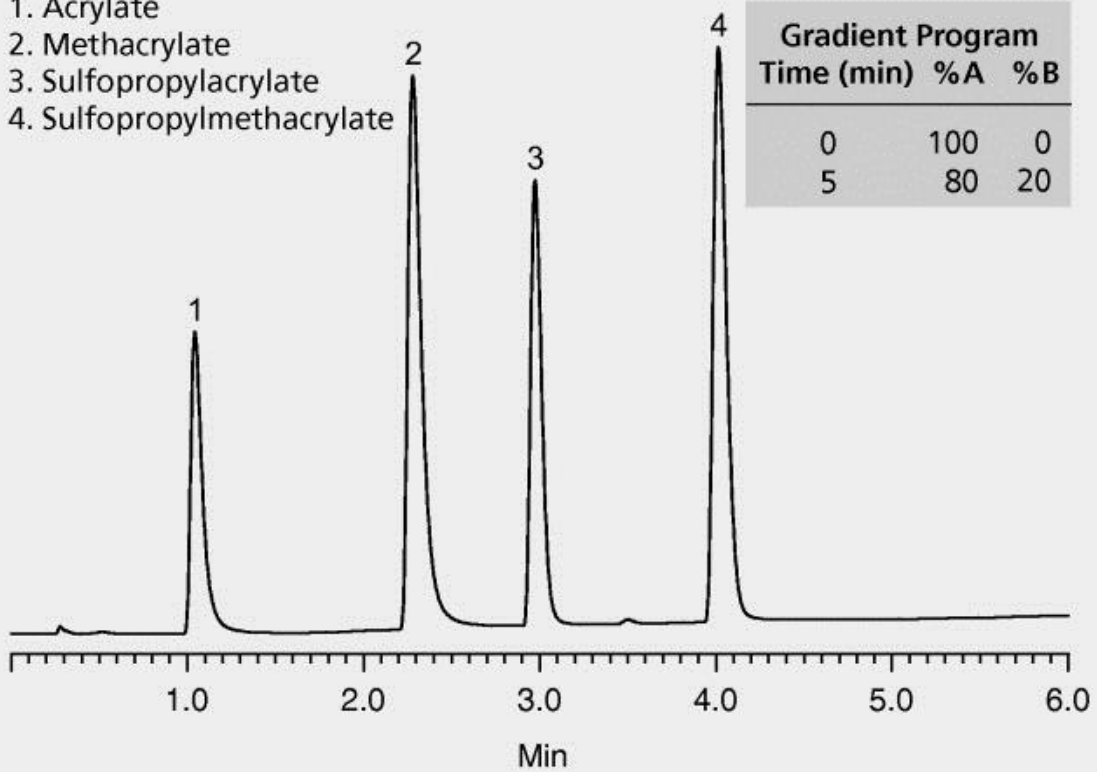


1. Acrylate
2. Methacrylate
3. Sulfopropylacrylate
4. Sulfopropylmethacrylate



test parameters	column: Discovery Zr-Carbon, 7.5 cm × 2.1 mm I.D., 3 µm particles (65726-U)
	mobile phase: (A) 30 mM phosphoric acid, pH 1.9; (B) acetonitrile
	flow rate: 0.42 mL/min
	column temp.: 50 °C
	detector: UV, 210 nm (200 nm will enhance sensitivity ~2x)
	injection: 1 µL
	sample: acrylate @ 0.05 g/L, methacrylate @ 0.05 g/L, sulfopropylacrylate @ 0.02 g/L, sulfopropylmethylacrylate @ 0.02 g/L in 30 mM H ₃ PO ₄ , pH 1.9