

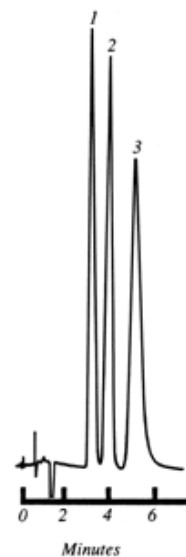
# 2-Methoxyethanol and Its Metabolites on 250 x 4.1 mm PRP-X300, P/N 79465

## Application #112

### Chromatographic Conditions:

<b>Packing Material:</b>	PRP-X300
<b>Column:</b>	250 x 4.1 mm
<b>Eluent A:</b>	10 mN Sulfuric Acid
<b>Eluent B:</b>	Methanol
<b>Mobile Phase Composition:</b>	19:01
<b>Gradient:</b>	Isocratic
<b>Flow Rate:</b>	2.0 mL/min
<b>Temperature:</b>	Ambient
<b>Detection:</b>	UV at 198 nm

Appl. #112 2-Methoxyethanol and Its Metabolites



Peak ID:	Compound:
1	2-Methoxyethanol
2	Methoxyacetic Acid

Peak ID:	Compound:
3	Glycylmethoxyacetic Acid