

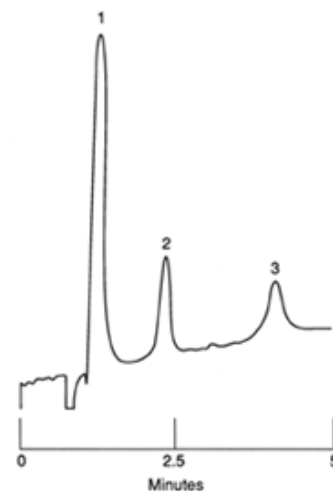
# Glycols and 1,4-Butanediol at 10 ppm on 250 x 4.1 mm PRP-X300, P/N 79465

## Application #225

### Chromatographic Conditions:

<b>Packing Material:</b>	PRP-X300
<b>Column:</b>	250 x 4.1 mm
<b>Eluent A:</b>	1 mN Sulfuric Acid
<b>Gradient:</b>	Isocratic
<b>Flow Rate:</b>	0.5 mL/min
<b>Temperature:</b>	Ambient
<b>Injection Volume:</b>	100 $\mu$ L
<b>Detection:</b>	Refractive Index

Appl. #225 Glycols and 1,4-Butanediol at 10ppm



Peak ID:	Compound:
1	Ethylene Glycol
2	Propylene Glycol

Peak ID:	Compound:
3	1,4-Butanediol