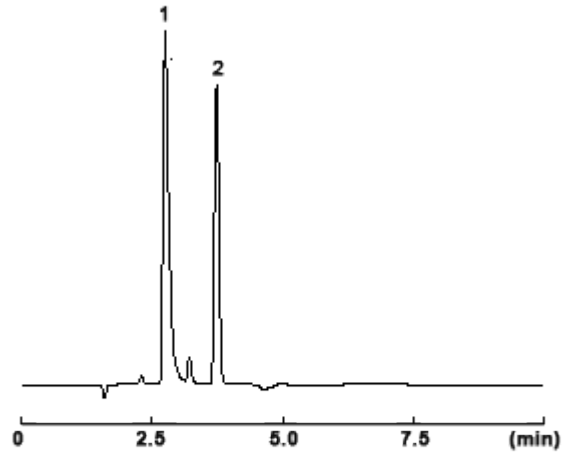


**Levulinic Acid, Methyl Levulinate**



Column : TCI Dual ODS-AX20 4.6 mm I.D. X 150 mm  
Mobile phase : CH<sub>3</sub>CN/ 20 mmol/L K<sub>2</sub>HPO<sub>4</sub> (pH 7.0, H<sub>3</sub>PO<sub>4</sub>) = 20/80  
Detector : UV 210 nm  
Flow rate : 1.0 mL/min  
Temperature : 25 °C  
Sample size : 1 µL (10 mg / 1mL H<sub>2</sub>O)  
Sample : 1. Levulinic Acid 2.742 min  
: 2. Methyl Levulinate 3.729 min